



**SECTION 75 ROADS ACT 1993
S.I. No. 119/1994 ROADS REGULATIONS 1994**

**TEMPORARY CLOSURE OF ROADS
NOTICE OF DECISION**

Carlow County Council having given the required notice intend to temporarily close the roads listed hereunder to facilitate Shareridge Utilities Ltd in carrying out watermain rehabilitation works in Tullow, Co. Carlow.

Road to be Closed:

L-2029 Mill Street, Tullowphelim, Tullow, Co. Carlow.

Mill Street (Lower) from it's junction with Chapel Lane to it's junction with Old Chapel Lane

Dates of Closure: 4th March 2025 – 24th March 2025 From: 24-hr To: 24-hr

Road to be Closed:

L-2029 Mill Street, Tullow, Co. Carlow.

Mill Street, Tullow, from it's junction with Bridge Street to it's junction with Old Chapel Lane

Dates of Closure: 18th March 2025 – 8th April 2025 From: 24-hr To: 24-hr

Road to be Closed:

L-2038 Old Chapel Lane, Tullow, Co. Carlow

Old Chapel Lane from it's junction with Mill Street/Chapel Lane to it's junction with Crosskeys

Dates of Closure: 19th May 2025 to 6th June 2025 From: 24-hr To: 24-hr

Road to be Closed:

L-6083 Bishop Street, Tullow, Co. Carlow

Dates of Closure: 2nd June 2025 to 20th June 2025 From: 24-hr To: 24-hr

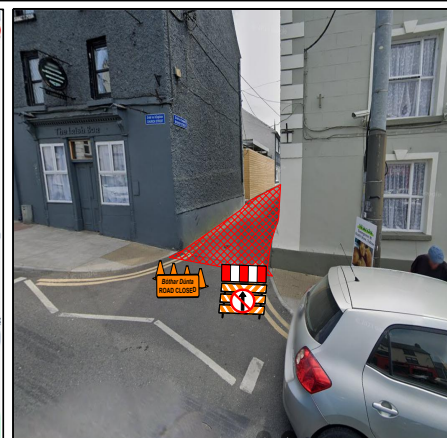
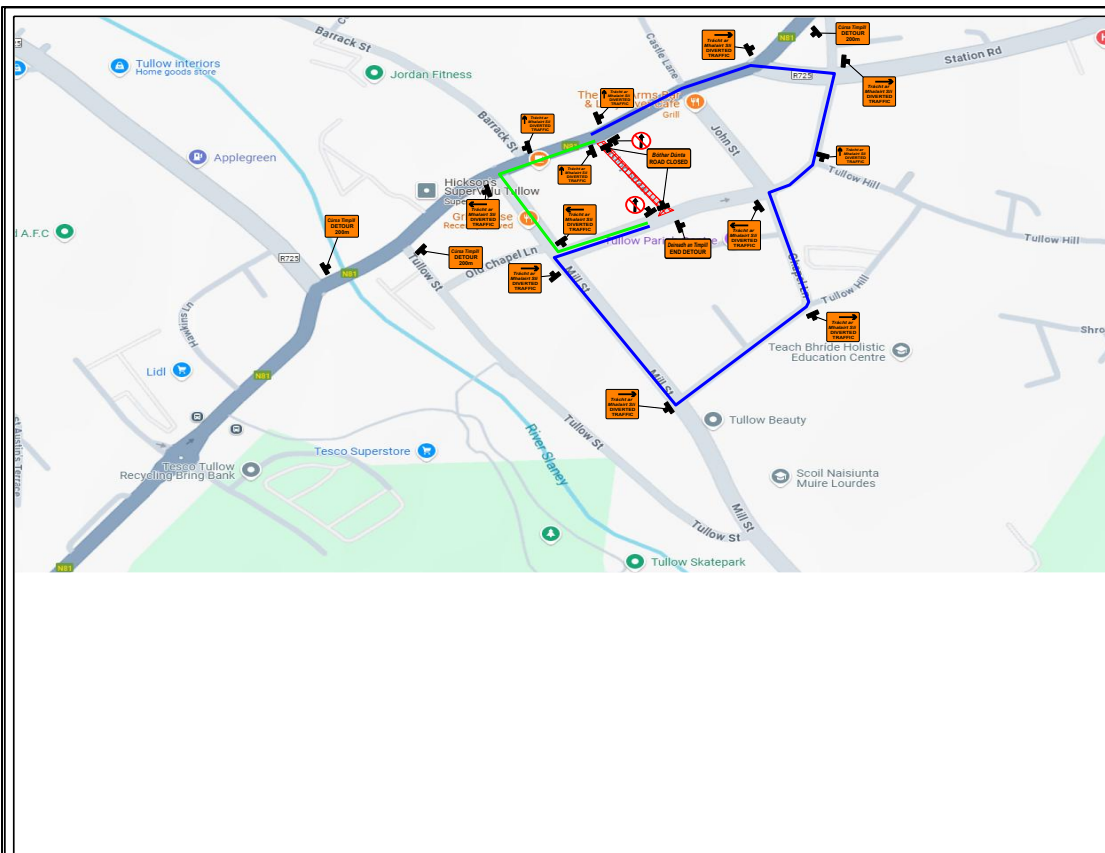
Road to be Closed:

L-2031 John Street, Tullow, Co. Carlow

Dates of Closure: 16th June 2025 to 4th July 2025 From: 24-hr To: 24-hr

Diversions and Alternative Routes will be signposted. Maps of the above routes are available to view on our website at www.carlow.ie under Statutory Notices.

**Pádraig O’Gorman,
Director of Services.**



Design Parameters		
Road Level	Roadworks Type	Speed Limit
1(iii)	8	50kph
Temporary Signs		
Sign Visibility	No of Signs	Sign Spacing
50	2	20
Taper at lane		
Taper at lane	Taper at hard shoulder	Transition length
1 in 5	1 in 5	n/a
Safety Zones & Lane Widths		
Long Safety Zone	Lateral Safety Zone	Minimum Lane Width
5	0.5	3(2.5)
Cone size & spacing		
Minimum Cone Height	Spacing at taper	Long Spacing
0.75	6	12
Lamp Spacing		
Lamp Spacing	At Tapers	Long Lamp spacing
6	6	24
Project Information		
Client		
Project -	Tullow Mains Rehab	
Title	Bishop St	
Dwg No :	TMP 001	
Date :	14/01/2025	
Rev :	0	
Drawn	Dónal O'Dwyer	
Checked:	Brian Duggan	

Level	Main	Sub	Carriageway Type	Speed / Speed Limit / (km/h)	Visibility to Stop and Go & Traffic Signals (m)
Level 1	i	Single	≤ 30	25	
	ii	Single	40	35	
	iii	Single	50	50	
	iv	Single	60	60	
Level 2	i	Multi-Lane / Dual	≤ 60	60	
	ii	Single	80	90	
Level 3	i	Dual and Motorway	80	120 ¹	
	ii	Dual and Motorway	≥ 100	N/A ²	

Notes:
 1. Use of Stop and Go or Traffic Signals on Level 3(i) require a site specific TTM Plan by a TTM Designer.
 2. Stop and Go and Traffic Signals are not applicable on Level 3(ii)

Method	Maximum Speed Limit (km/h)	Coned Area Length (m)	Maximum Traffic Flow
Give and Take ¹	50	50 maximum	400 veh/hr and 20 MCV/hrs
Priority	100	80 maximum	850 veh/hr
Stop and Go discs	100	100	1400 veh/hr
		200	1260 veh/hr
		300	1060 veh/hr
		400	940 veh/hr
		500	840 veh/hr
Temporary Traffic Signals	100	500 maximum	Not applicable
All Stop ²	100	Not applicable	300 veh/hr

Table 8.4.2.1: Shuttle working parameters
 Notes: 1. Max speed limit for Give and Take does not apply when used with Type C or SSO.
 2. Where used for installation of TTM maximum traffic flow is carriageway capacity.

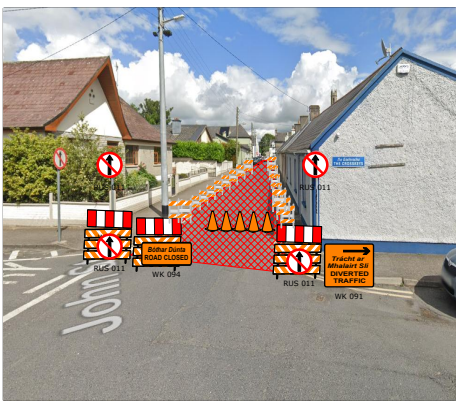
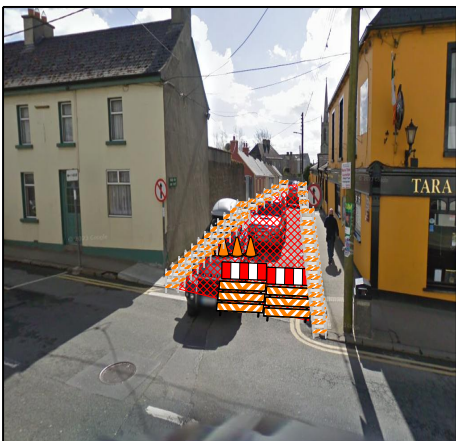
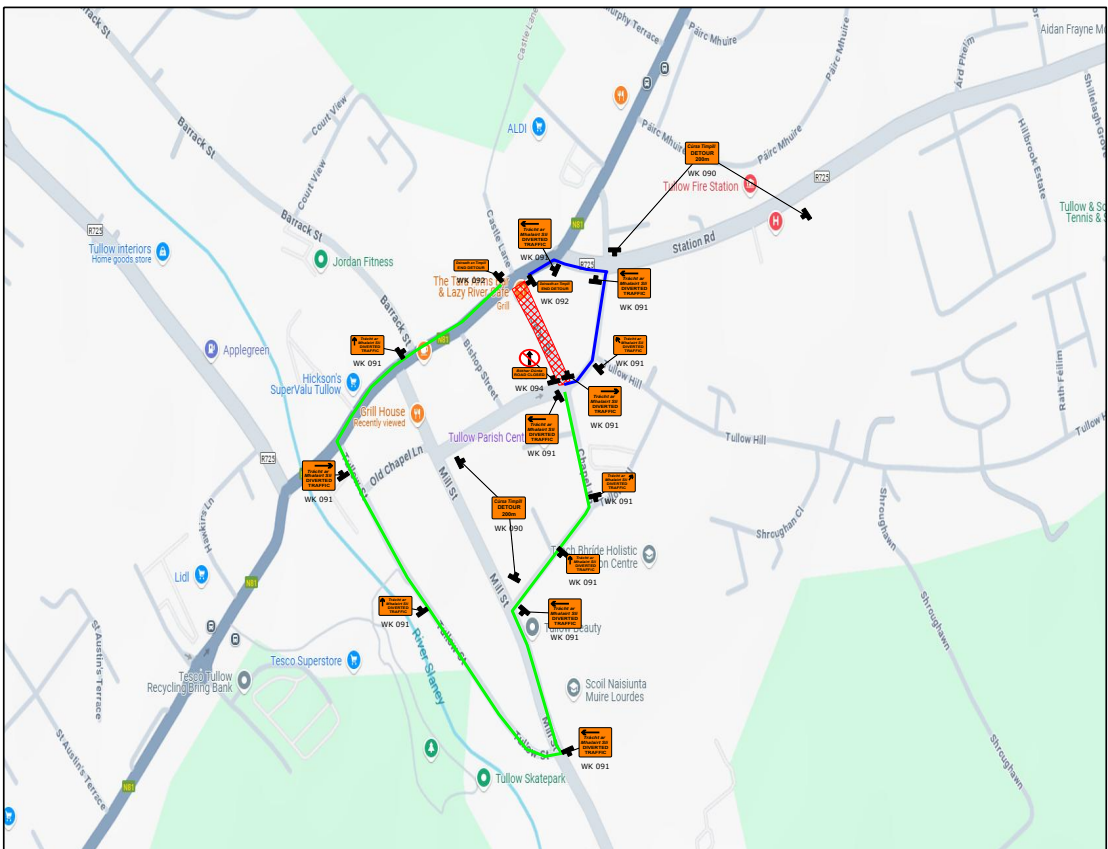
Speed (km/h)	Clear Visibility Before and After Coned Area (m)
≤ 50	60
60	70
80	80
100	100

Table 8.4.4.1: Priority Visibility Requirements

Design Parameter	Type A > 12 hours	Type B < 12 hours	Type C < 15 mins
Advance Warning Signage			
Sign Size (mm)	600	600	-
Sign Visibility (m)	50	50	50
Number of Signs	2	2	-
Cumulative Distance (m)	40	40	-
Distance between Advance Warning Signs (m)	20	20	-
Taper			
Lane Taper Rate ^a	1 in 5	1 in 5	-
Hard Shoulder Taper Rate ^a	-	-	-
Cones			
Cone Height (mm)	750	750	-
Taper Spacing (m) ^b	3	3	-
Longitudinal Spacing (m) ^b	3	3	-
Lamps (only areas only)			
Taper Spacing (m)	6	6	-
Longitudinal Spacing (m)	6	6	-
Safety Zones			
Longitudinal (m)	5	5	-
Lateral (m)	0.5	0.5	-
Lanes			
Lane Width (m) ^c	3 (2.5)	3 (2.5)	-
Two-way Roadway Width (m)	6	6	-

Legend
Cone
Type II Barricade
Work Area

Manifest
12 x WK 091
10 x Cone
8 x Type II Barricade
5 x RUS 011 No Straight Ahead
3 x WK 090
2 x WK 094
2 x WK 094 Road Closed
1 x Type III Barricade (Road Closed)
1 x W 183 Barrier Board - Three Bars
1 x WK 092



Design Parameters		
Road Level	Roadworks Type	Speed Limit
1(iii)	B	50kph
Temporary Signs		
Sign Visibility	No of Signs	Sign Spacing
50	2	20
Taper at lane		
Taper at lane	Taper at hard shoulder	Transition length
1 in 5	1 in 5	n/a
Safety Zones & Lane Widths		
Long Safety Zone	Lateral Safety Zone	Minimum Lane Width
5	0.5	3(2.5)
Cone size & spacing		
Minimum Cone Height	Spacing at taper	Long Spacing
0.75	6	12
Lamp Spacing		
Lamp Spacing	At Tapers	Long Lamp spacing
6	6	24

Level	Main	Sub	Carriageway Type	Speed / Speed Limit / (km/h)	Visibility to Stop and Go & Traffic Signals (m)
Level 1	i	Single	Single	≤ 30	25
	ii	Single	Single	40	35
	iii	Single	Single	50	50
	iv	Single	Single	60	60
Level 2	i	Single	Multi-Lane / Dual	≤ 60	60
	ii	Single	Single	80	90
Level 3	i	Dual and Motorway	Single	80	120 ¹
	ii	Dual and Motorway	Dual and Motorway	≥ 100	N/A ²

Notes:
 1. Use of Stop and Go or Traffic Signals on Level 3(i) require a site specific TTM Plan by a TTM Designer.
 2. Stop and Go and Traffic Signals are not applicable on Level 3(ii)

Method	Maximum Speed Limit (km/h)	Coned Area Length (m)	Maximum Traffic Flow
Give and Take ¹	50	50 maximum	400 veh/hr and 20 MCV/hr
Priority	100	80 maximum	850 veh/hr
Stop and Go discs	100	100	1400 veh/hr
		200	1260 veh/hr
		300	1060 veh/hr
		400	940 veh/hr
		500	840 veh/hr
Temporary Traffic Signals	100	500 maximum	Not applicable
All Stop ²	100	Not applicable	300 veh/hr

Table 8.4.2.1: Shuttle working parameters
 Notes: 1. Max speed limit for Give and Take does not apply when used with Type C or SSO.
 2. Where used for installation of TTM maximum traffic flow is carriageway capacity.

Speed (km/h)	Clear Visibility Before and After Coned Area (m)
≤ 50	60
60	70
80	80
100	100

Table 8.4.4.1: Priority Visibility Requirements

Design Parameter	Type A > 12 hours	Type B < 12 hours	Type C < 15 mins
Advance Warning Signage			
Sign Size (mm)	600	600	-
Sign Visibility (m)	50	50	50
Number of Signs	2	2	-
Cumulative Distance (m)	40	40	-
Distance between Advance Warning Signs (m)	20	20	-
Taper			
Lane Taper Rate ^a	1 in 5	1 in 5	-
Hard Shoulder Taper Rate ^a	-	-	-
Cones			
Cone Height (mm)	750	750	-
Taper Spacing (m) ^b	3	3	-
Longitudinal Spacing (m) ^b	3	3	-
Lamps (onlit areas only)			
Taper Spacing (m)	6	6	-
Longitudinal Spacing (m)	6	6	-
Safety Zones			
Longitudinal (m)	5	5	-
Lateral (m)	0.5	0.5	-
Lanes			
Lane Width (m) ^c	3 (2.5)	3 (2.5)	-
Two-way Roadway Width (m)	6	6	-

Legend

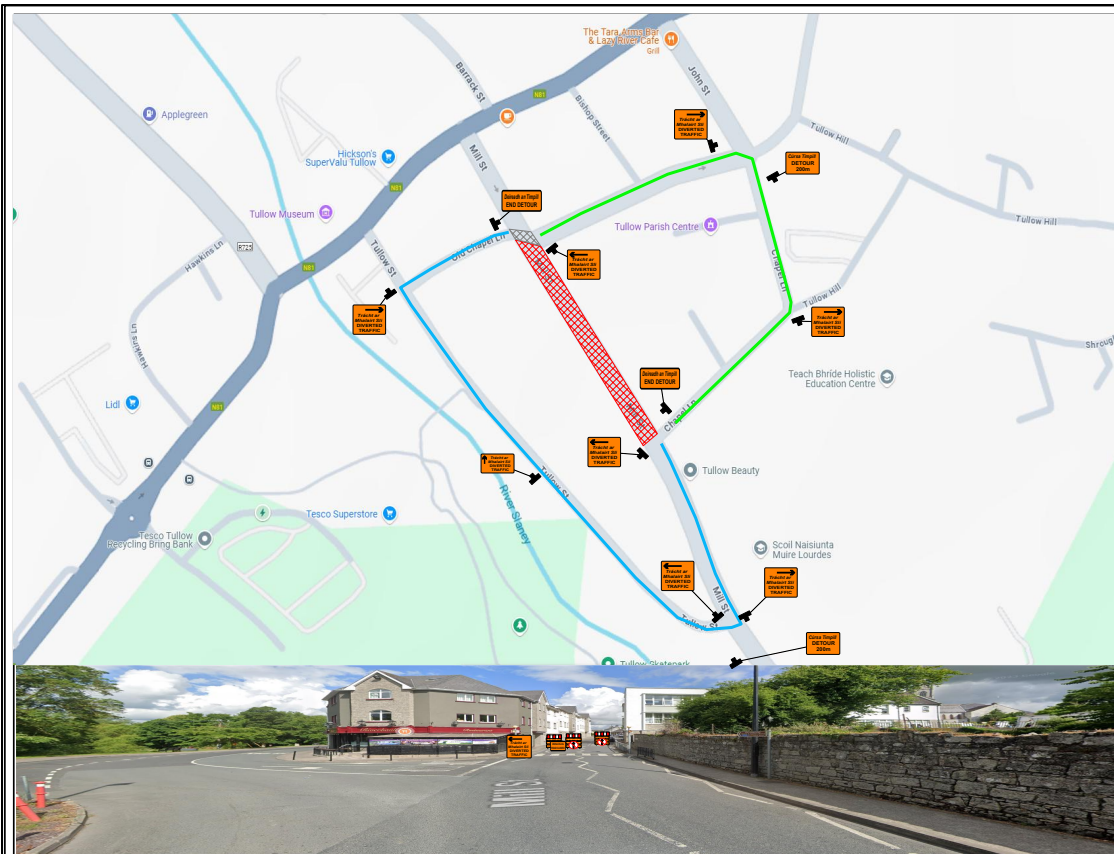
- Cone
- Type II Barricade
- Work Area

Manifest



- 52 x Type II Barricade
- 13 x WK 091
- 9 x Cone
- 5 x RUS 011
- 5 x Type III Barricade (Road Closed)
- 5 x W 183 Barrier Board - Three Bars
- 4 x WK 090
- 2 x WK 092
- 2 x WK 094

Project Information	
Client	
Project -	Tullow Mains Rehab
Title	John Street
Dwg No :	TMP 001
Date :	14/01/2025
Rev :	0
Drawn	Dónal O'Dwyer
Checked:	Brian Duggan





Plan Scale
1:500 (1cm = 5m)

Design Parameters		
Road Level	Roadworks Type	Speed Limit
1(iii)	B	50kph
Temporary Signs		
Sign Visibility	No of Signs	Sign Spacing
50	2	20
Taper at lane		
Taper at lane	Taper at hard shoulder	Transition length
1 in 5	1 in 5	n/a
Safety Zones & Lane Widths		
Long Safety Zone	Lateral Safety Zone	Minimum Lane Width
5	0.5	3(2.5)
Cone size & spacing		
Minimum Cone Height	Spacing at taper	Long Spacing
0.75	6	12
Lamp Spacing		
Lamp Spacing	At Tapers	Long Lamp spacing
6	6	24
Project Information		
Client		
		
Project -	Tullow Mains Rehab	
Title	Mill St - Phase 1	
Dwg No :	TMP 001	
Date :	14/01/2025	
Rev :	0	
Drawn	Dónal O'Dwyer	
Checked:	Brian Duggan	
		

Level	Main	Sub	Carriageway Type	Speed / Speed Limit / (km/h)	Visibility to Stop and Go & Traffic Signals (m)
Level 1	i	Single	≤ 30	25	
	ii	Single	40	35	
	iii	Single	50	50	
	iv	Single	60	60	
Level 2	i	Multi-Lane / Dual	≤ 60	60	
	ii	Single	80	90	
Level 3	i	Dual and Motorway	80	120 ¹	
	ii	Dual and Motorway	≥ 100	N/A ²	

Notes:
 1. Use of Stop and Go or Traffic Signals on Level 3(i) require a site specific TTM Plan by a TTM Designer.
 2. Stop and Go and Traffic Signals are not applicable on Level 3(ii)

Method	Maximum Speed Limit (km/h)	Coned Area Length (m)	Maximum Traffic Flow
Give and Take ¹	50	50 maximum	400 veh/hr and 20 HGV/hr
Priority	100	80 maximum	850 veh/hr
Stop and Go discs	100	100	1400 veh/hr
		200	1260 veh/hr
		300	1060 veh/hr
		400	940 veh/hr
		500	840 veh/hr
Temporary Traffic Signals	100	500 maximum	Not applicable
All Stop ²	100	Not applicable	300 veh/hr

Table 8.4.2.1: Shuttle working parameters
 Notes: 1. Max speed limit for Give and Take does not apply when used with Type C or SSO.
 2. Where used for installation of TTM maximum traffic flow is carriageway capacity.

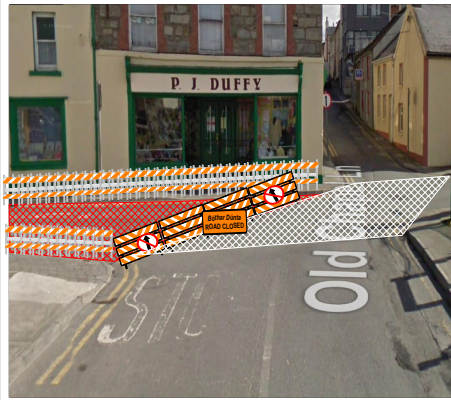
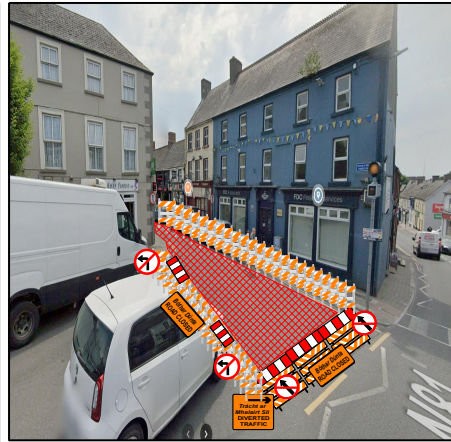
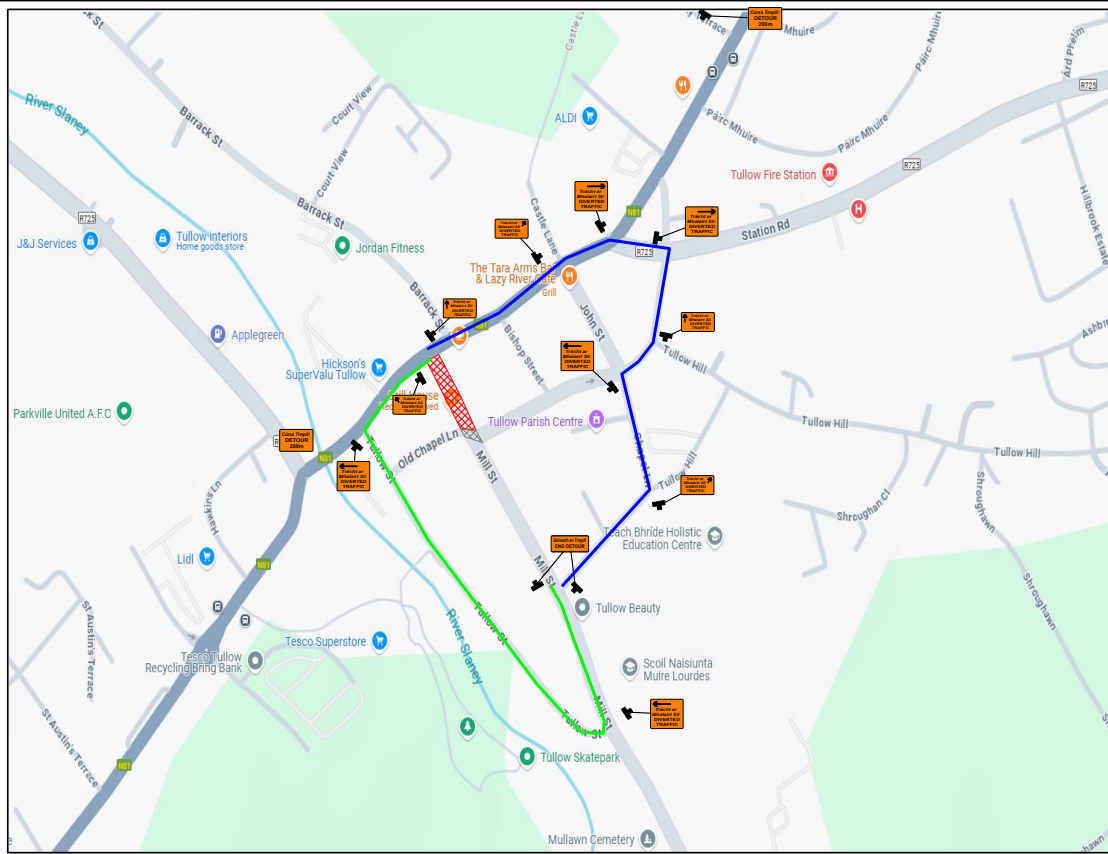
Speed (km/h)	Clear Visibility Before and After Coned Area (m)
≤ 50	60
60	70
80	80
100	100



Table 8.4.4.1: Priority Visibility Requirements

Design Parameter	Type A > 12 hours	Type B < 12 hours	Type C < 15 mins
Advance Warning Signage			
Sign Size (mm)	600	600	-
Sign Visibility (m)	50	50	50
Number of Signs	2	2	-
Cumulative Distance (m)	40	40	-
Distance between Advance Warning Signs (m)	20	20	-
Taper			
Lane Taper Rate ^a	1 in 5	1 in 5	-
Hard Shoulder Taper Rate ^a	-	-	-
Cones			
Cone Height (mm)	750	750	-
Taper Spacing (m) ^b	3	3	-
Longitudinal Spacing (m) ^b	3	3	-
Lamps (onlit areas only)			
Taper Spacing (m)	6	6	-
Longitudinal Spacing (m)	6	6	-
Safety Zones			
Longitudinal (m)	5	5	-
Lateral (m)	0.5	0.5	-
Lanes			
Lane Width (m) ^c	3 (2.5)	3 (2.5)	-
Two-way Roadway Width (m)	6	6	-



Manifest
11 x WK 091
9 x Type III Barricade (Road Closed)
9 x W 183 Barrier Board - Three Bars
6 x RUS 011 No Straight Ahead
3 x WK 094 Road Closed
2 x WK 090
2 x WK 092



Design Parameters		
Road Level	Roadworks Type	Speed Limit
1(iii)	B	50kph
Temporary Signs		
Sign Visibility	No of Signs	Sign Spacing
50	2	20
Taper at lane		
Taper at lane	Taper at hard shoulder	Transition length
1 in 5	1 in 5	n/a
Safety Zones & Lane Widths		
Long Safety Zone	Lateral Safety Zone	Minimum Lane Width
5	0.5	3(2.5)
Cone size & spacing		
Minimum Cone Height	Spacing at taper	Long Spacing
0.75	6	12
Lamp Spacing		
Lamp Spacing	At Tapers	Long Lamp spacing
6	6	24
Project Information		
Client 		
Project -	Tullow Mains Rehab	
Title	Mill St - Phase 2	
Dwg No :	TMP 001	
Date :	14/01/2025	
Rev :	0	
Drawn	Dónal O'Dwyer	
Checked:	Brian Duggan	
		

Level	Main	Sub	Carriageway Type	Speed / Speed Limit / (km/h)	Visibility to Stop and Go & Traffic Signals (m)
Level 1	i	Single	Single	≤ 30	25
	ii	Single	Single	40	35
	iii	Single	Single	50	50
	iv	Single	Single	60	60
Level 2	i	Single	Multi-Lane / Dual	≤ 60	60
	ii	Single	Single	80	90
Level 3	i	Dual and Motorway	Single	80	120 ¹
	ii	Dual and Motorway	Dual	≥ 100	N/A ²

Notes:
 1. Use of Stop and Go or Traffic Signals on Level 3(i) require a site specific TTM Plan by a TTM Designer.
 2. Stop and Go and Traffic Signals are not applicable on Level 3(ii)

Method	Maximum Speed Limit (km/h)	Coned Area Length (m)	Maximum Traffic Flow
Give and Take ¹	50	50 maximum	400 veh/hr and 20 MCV/hr
Priority	100	80 maximum	850 veh/hr
Stop and Go discs	100	100	1400 veh/hr
		200	1260 veh/hr
		300	1060 veh/hr
		400	940 veh/hr
		500	840 veh/hr
Temporary Traffic Signals	100	500 maximum	Not applicable
All Stop ²	100	Not applicable	300 veh/hr



Table 8.4.2.1: Shuttle working parameters
 Notes: 1. Max speed limit for Give and Take does not apply when used with Type C or SSO.
 2. Where used for installation of TTM maximum traffic flow is carriageway capacity.

Speed (km/h)	Clear Visibility Before and After Coned Area (m)
≤ 50	60
60	70
80	80
100	100

Table 8.4.4.1: Priority Visibility Requirements

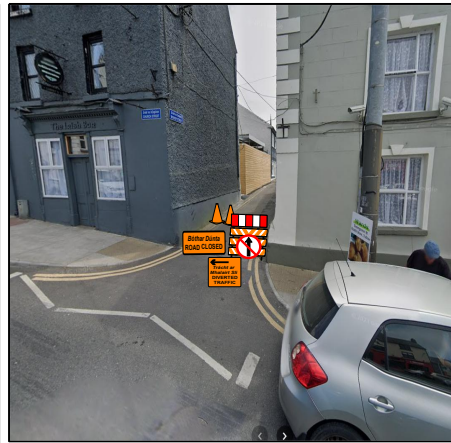
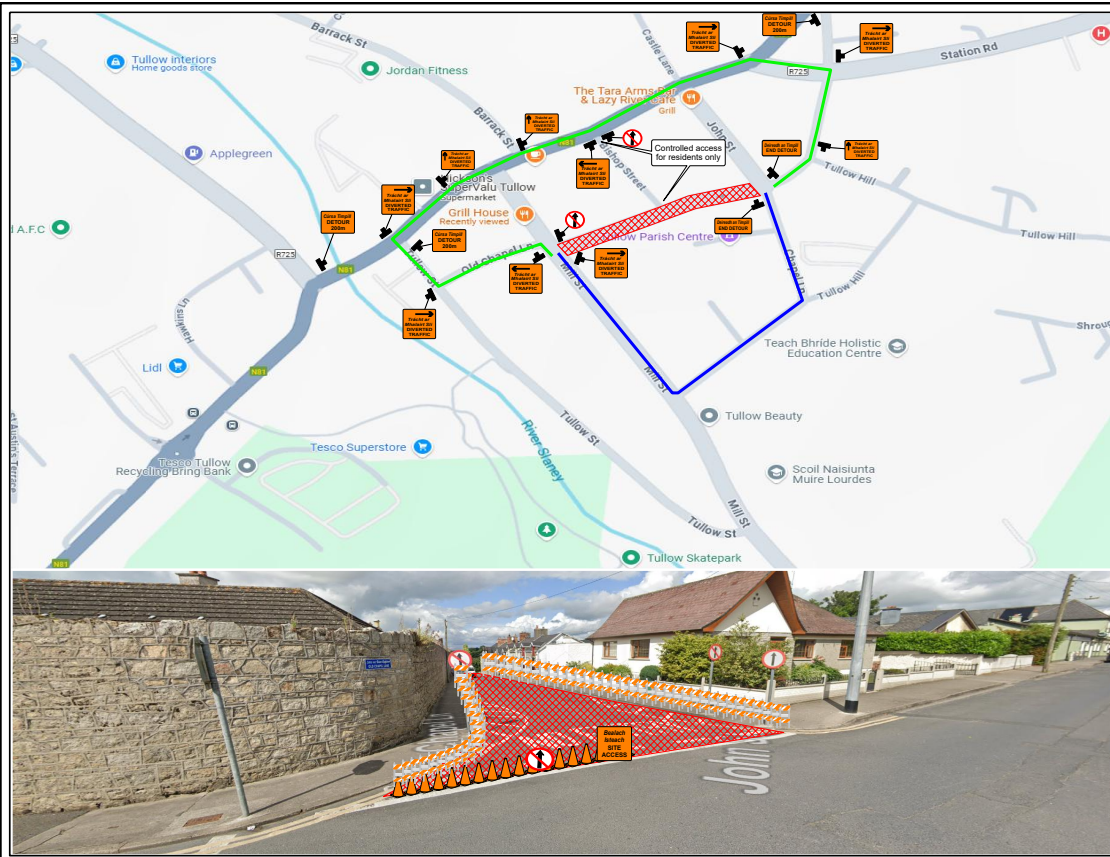
Design Parameter	Type A > 12 hours	Type B < 12 hours	Type C < 15 mins
Advance Warning Signage			
Sign Size (mm)	600	600	-
Sign Visibility (m)	50	50	50
Number of Signs	2	2	-
Cumulative Distance (m)	40	40	-
Distance between Advance Warning Signs (m)	20	20	-
Taper			
Lane Taper Rate ^A	1 in 5	1 in 5	-
Hard Shoulder Taper Rate ^A	-	-	-
Cones			
Cone Height (mm)	750	750	-
Taper Spacing (m) ^B	3	3	-
Longitudinal Spacing (m) ^B	3	3	-
Lamps (only areas only)			
Taper Spacing (m)	6	6	-
Longitudinal Spacing (m)	6	6	-
Safety Zones			
Longitudinal (m)	5	5	-
Lateral (m)	0.5	0.5	-
Lanes			
Lane Width (m) ^C	3 (2.5)	3 (2.5)	-
Two-way Roadway Width (m)	6	6	-

Legend

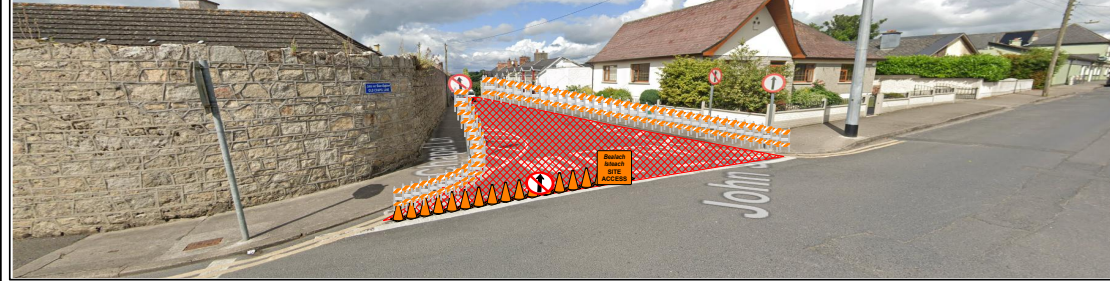
-  Type II Barricade
-  Work Area

Manifest

- 86 x Type II Barricade
- 11 x WK 091
- 7 x Type III Barricade (Road Closed)
- 5 x W 183 Barrier Board - Three Bars
- 4 x RUS 011 No Straight Ahead
- 3 x WK 094 Road Closed
- 2 x RUS 013
- 2 x WK 090
- 2 x WK 092



Design Parameters		
Road Level	Roadworks Type	Speed Limit
1(iii)	B	50kph
Temporary Signs		
Sign Visibility	No of Signs	Sign Spacing
50	2	20
Taper at lane		
Taper at lane	Taper at hard shoulder	Transition length
1 in 5	1 in 5	n/a
Safety Zones & Lane Widths		
Long Safety Zone	Lateral Safety Zone	Minimum Lane Width
5	0.5	3(2.5)
Cone size & spacing		
Minimum Cone Height	Spacing at taper	Long Spacing
0.75	6	12
Lamp Spacing		
Lamp Spacing	At Tapers	Long Lamp spacing
6	6	24



Level	Main	Sub	Carriageway Type	Speed / Speed Limit / (km/h)	Visibility to Stop and Go & Traffic Signals (m)
Level 1	i	Single	Single	≤ 30	25
	ii	Single	Single	40	35
	iii	Single	Single	50	50
	iv	Single	Single	60	60
Level 2	i	Multi-Lane / Dual	Single	≤ 60	60
	ii	Single	Single	80	90
Level 3	i	Dual and Motorway	Single	80	120 ¹
	ii	Dual and Motorway	Single	≥ 100	N/A ²

Notes:
 1. Use of Stop and Go or Traffic Signals on Level 3(i) require a site specific TTM Plan by a TTM Designer.
 2. Stop and Go and Traffic Signals are not applicable on Level 3(ii)

Method	Maximum Speed Limit (km/h)	Coned Area Length (m)	Maximum Traffic Flow
Give and Take ¹	50	50 maximum	400 veh/hr and 20 MCV/hrs
Priority	100	80 maximum	850 veh/hr
Stop and Go discs	100	100	1400 veh/hr
		200	1260 veh/hr
		300	1060 veh/hr
		400	940 veh/hr
		500	840 veh/hr
Temporary Traffic Signals	100	500 maximum	Not applicable
All Stop ²	100	Not applicable	300 veh/hr

Table 8.4.2.1: Shuttle working parameters
 Notes: 1. Max speed limit for Give and Take does not apply when used with Type C or SSO.
 2. Where used for installation of TTM maximum traffic flow is carriageway capacity.

Speed (km/h)	Clear Visibility Before and After Coned Area (m)
≤ 50	60
60	70
80	80
100	100

Table 8.4.4.1: Priority Visibility Requirements

Design Parameter	Type A > 12 hours	Type B < 12 hours	Type C < 15 mins
Advance Warning Signage			
Sign Size (mm)	600	600	-
Sign Visibility (m)	50	50	50
Number of Signs	2	2	-
Cumulative Distance (m)	40	40	-
Distance between Advance Warning Signs (m)	20	20	-
Taper			
Lane Taper Rate ^a	1 in 5	1 in 5	-
Hard Shoulder Taper Rate ^a	-	-	-
Cones			
Cone Height (mm)	750	750	-
Taper Spacing (m) ^b	3	3	-
Longitudinal Spacing (m) ^b	3	3	-
Lamps (only areas only)			
Taper Spacing (m)	6	6	-
Longitudinal Spacing (m)	6	6	-
Safety Zones			
Longitudinal (m)	5	5	-
Lateral (m)	0.5	0.5	-
Lanes			
Lane Width (m) ^c	3 (2.5)	3 (2.5)	-
Two-way Roadway Width (m)	6	6	-

Legend

- Cone
- Type II Barricade
- Work Area

Manifest

- 52 x Type II Barricade
- 20 x Cone
- 12 x WK 091
- 6 x RUS 011 No Straight Ahead
- 4 x Type III Barricade (Road Closed)
- 3 x WK 090
- 2 x WK 092
- 2 x WK 094 Road Closed
- 1 x W 183 Barrier Board - Three Bars
- 1 x WK 052

Project Information

Client:

Project - Tullow Mains Rehab

Title: Old Chapel Lane

Dwg No: TMP 001

Date: 14/01/2025

Rev: 0

Drawn: Dónal O'Dwyer

Checked: Brian Duggan