



COMHAIRLE CONTAE  
CHEATHARLACH  
CARLOW COUNTY COUNCIL

**SECTION 75 ROADS ACT 1993  
S.I. No. 119/1994 ROADS REGULATIONS 1994**

**TEMPORARY CLOSURE OF ROADS  
NOTICE OF DECISION**

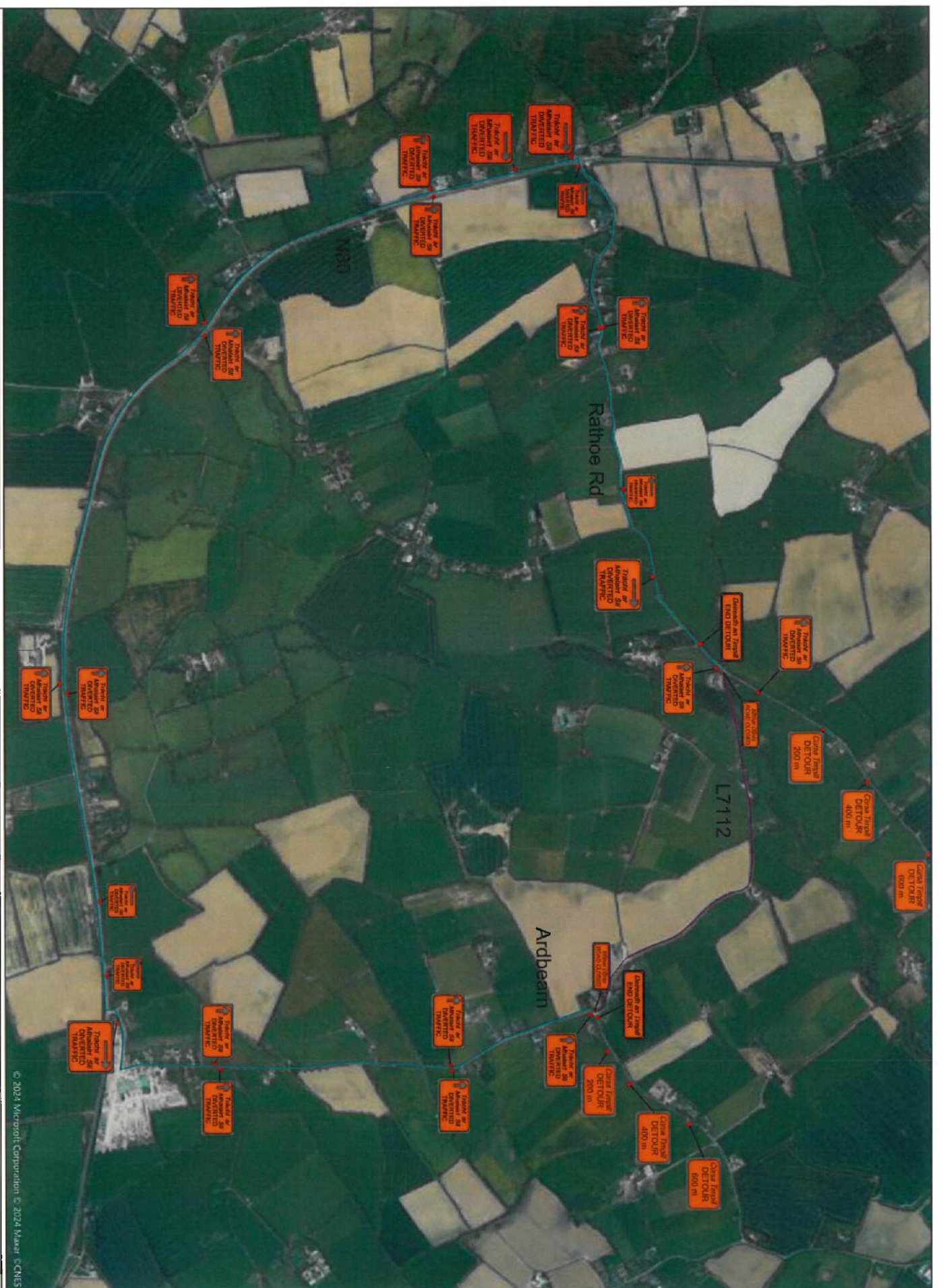
**ROAD: L-7112 - RATHOE, CO. CARLOW**

Carlow County Council having given the required notice intend to temporarily close the above road to facilitate Kendra Civil Engineering Ireland Ltd in carrying out essential maintenance works for the grid connection from the Garreenleen Solar Farm Substation to the ESB substation at Kellis.

**Dates of Closure: 19<sup>th</sup> March 2025 – 18<sup>th</sup> May 2025      From: 24-hr      To: 24-hr**

**Diversions and Alternative Routes will be signposted. A map of the above routes is available to view on our website at [www.carlow.ie](http://www.carlow.ie) under Statutory Notices.**

**Pádraig O’Gorman,  
Director of Services.**



**Legend**

- Wedge Zone
- Dimension Route
- Traffic Cone
- Covered Section of Road
- Longitudinal Safety Area
- Chowee Barr
- Cone mounted sign

- Parameters:**
1. Local road speed - 80km/h
  2. Distance between Advance signs - 200m
  3. No. of Advance signs - 4
  4. Min. Visibility of signs - 120m
  5. Longitudinal Safety Zone - 60m
  6. Lateral Safety Zone - 1.2m
  7. Lead in Taper - 45 degree
  8. Max. at Taper cone spacing - 3m
  9. Max longitudinal cone spacing - 12m.
  10. Traffic Flow is Road Closure with Diversion

- Notes:**
1. All signs to comply with Chapter 8
  2. Exact sign positions to be agreed on site.
  3. Safety zones to be maintained at all times.
  4. Signs to be positioned so as not to obstruct other road users.
  5. Min. Line width to be maintained at 3m at all times, 3.25m where possible.
  6. End of Road Works signs to be placed within 20m of works area end.
  7. Existing Signage to be covered whilst T.M in operation.
  8. Marshals at both end of Road Closure.